

Electronic ballasts for T5 fluorescent lamps

freedom in lighting

- Smallest available quality ballast
- Standard & sidemount possibilities
- Optimal lamp operation
- Low power losses
- Long lifetime
- Green values
- High power factor

14-80 W 220-240 V, 50-60 Hz



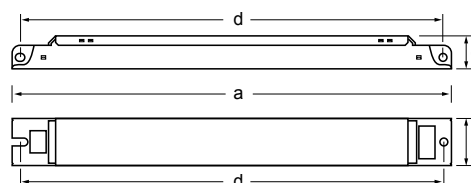
A2 BAT



| Lamp type | Wattage | No. of lamps | Ballast | EEI | Dimensions | Connection | Weight | Circuit power | Mains current | Lamp power |
|-----------|---------|--------------|---------------|--------|------------|------------|--------|---------------|---------------|------------|
| | | | | | | (p.30) | | | | |
| T5 | 14 | 1 | EL1x14-35ngn5 | A2 BAT | 1 | 1 | 127 | 15.5 | 0.08-0.06 | 13.7 |
| | 14 | 2 | EL2x14-35ngn5 | A2 BAT | 2 | 12 | 204 | 31 | 0.16-0.15 | 13.7 |
| | 14 | 3 | EL3/4x14ngn5 | A2 | 2 | 6 | 204 | 46 | 0.22-0.19 | 13.7 |
| | 14 | 4 | EL3/4x14ngn5 | A2 | 2 | 7 | 204 | 62 | 0.29-0.26 | 13.7 |
| | 14 | 4 | EL4x14ngn5 | A2 BAT | 2 | 7 | 190 | 63 | 0.30-0.26 | 13.7 |
| | 21 | 1 | EL1x14-35ngn5 | A2 BAT | 1 | 1 | 127 | 23 | 0.12-0.10 | 20.7 |
| | 21 | 2 | EL2x14-35ngn5 | A2 BAT | 2 | 12 | 204 | 45 | 0.22-0.19 | 20.7 |
| | 24 | 1 | EL1x24ngn5 | A2 | 1 | 1 | 130 | 25 | 0.12-0.11 | 22.5 |
| | 24 | 2 | EL2x24ngn5 | A2 BAT | 2 | 8 | 193 | 49 | 0.24-0.21 | 22.5 |
| | 24 | 3 | EL3/4x24ngn5 | A2 BAT | 2 | 6 | 208 | 73 | 0.34-0.30 | 22.5 |
| | 24 | 4 | EL3/4x24ngn5 | A2 BAT | 2 | 7 | 208 | 97 | 0.44-0.40 | 22.5 |
| | 28 | 1 | EL1x14-35ngn5 | A2 BAT | 1 | 1 | 127 | 30 | 0.15-0.12 | 27.8 |
| | 28 | 2 | EL2x14-35ngn5 | A2 BAT | 2 | 12 | 204 | 60 | 0.29-0.25 | 27.8 |
| | 35 | 1 | EL1x14-35ngn5 | A2 BAT | 1 | 1 | 127 | 38 | 0.18-0.16 | 34.7 |
| | 35 | 2 | EL2x14-35ngn5 | A2 BAT | 2 | 12 | 204 | 75 | 0.35-0.31 | 34.7 |
| | 39 | 1 | EL1x39/36ngn5 | A2 BAT | 1 | 1 | 130 | 42 | 0.19-0.18 | 38 |
| | 39 | 2 | EL2x39/36ngn5 | A2 BAT | 2 | 8 | 195 | 81 | 0.36-0.32 | 38 |
| | 49 | 1 | EL1x49ngn5 | A2 BAT | 1 | 1 | 130 | 55 | 0.25-0.23 | 49.3 |
| | 49 | 2 | EL2x49ngn5 | A2 BAT | 2 | 12 | 211 | 105 | 0.50-0.45 | 49.3 |
| | 49 | 2 | EL2x49ngn5-XL | A2 BAT | 3 | 12 | 265 | 105 | 0.50-0.45 | 49.3 |
| | 54 | 1 | EL1x54ngn5 | A2 BAT | 1 | 1 | 130 | 58 | 0.26-0.24 | 53.8 |
| | 54 | 2 | EL2x54ngn5 | A2 BAT | 2 | 8 | 206 | 115 | 0.53-0.48 | 53.8 |
| | 54 | 2 | EL2x54ngn5-XL | A2 BAT | 3 | 8 | 260 | 115 | 0.53-0.48 | 53.8 |
| | 80 | 1 | EL1x80ngn5 | A2 BAT | 2 | 1 | 192 | 86 | 0.42-0.36 | 80 |
| | 80 | 2 | EL2x80ngn5 | A2 BAT | 3 | 12 | 300 | 170 | 0.80-0.73 | 80 |

Note: See pages 30-33 for connection diagrams and additional characteristics.

| Dimensions | 1 | 2 | 3 |
|-----------------|-----|-----|-----|
| Lenght 'a' (mm) | 190 | 280 | 360 |
| Width 'b' (mm) | 30 | 30 | 30 |
| Height 'c' (mm) | 21 | 21 | 21 |
| 'd' (mm) | 180 | 270 | 350 |



Delivery information

| Ballast | Unit package | | Transportation package | | |
|---------------------------|-------------------------|-----------------------|----------------------------------|--------------------|--------------------|
| | Minimum delivery amount | Plastic binding strip | One-way pallet 1200 x 820 (pcs.) | Pallet weight (kg) | Pallet height (cm) |
| EL1 x ngn5 | 10 | ● | 2000 | 260-300 | 48 |
| EL2 x ngn5 & EL3/4 x ngn5 | 10 | ● | 2000 | 400-450 | 56 |
| EL2x55ngn5 & EL2x80ngn5 | 10 | ● | 1500 | 400-420 | 56 |

Electronic ballasts for T5-eco fluorescent lamps

14-80 W 220-240 V, 50-60 Hz

- Smallest available quality ballast
- Standard & sidemount possibilities
- Optimal lamp operation
- Low power losses
- Long lifetime
- Green values
- High power factor



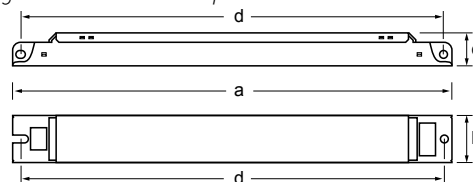
A2 BAT

| Lamp type | No. of lamps | Ballast | EEI | Dimensions | Connection | Weight | Circuit power ¹⁾ | Mains current ¹⁾ | Lamp power ¹⁾ | |
|-----------|--------------|---------|---------------|------------|------------|--------|-----------------------------|-----------------------------|--------------------------|------|
| | | | | | | | (W) | (A) | (W) | |
| T5 eco | 14 eco | 1 | EL1x14-35ngn5 | A2 BAT | 1 | 1 | 127 | 15.5 | 0.08-0.06 | 13.7 |
| | 14 eco | 2 | EL2x14-35ngn5 | A2 BAT | 2 | 12 | 204 | 31 | 0.16-0.15 | 13.7 |
| | 14 eco | 3 | EL3/4x14ngn5 | A2 | 2 | 6 | 204 | 46 | 0.22-0.19 | 13.7 |
| | 14 eco | 4 | EL3/4x14ngn5 | A2 | 2 | 7 | 204 | 62 | 0.29-0.26 | 13.7 |
| | 14 eco | 4 | EL4x14ngn5 | A2 BAT | 2 | 7 | 190 | 63 | 0.30-0.26 | 13.7 |
| | 21 eco | 1 | EL1x14-35ngn5 | A2 BAT | 1 | 1 | 127 | 23 | 0.12-0.10 | 20.7 |
| | 21 eco | 2 | EL2x14-35ngn5 | A2 BAT | 2 | 12 | 204 | 45 | 0.22-0.19 | 20.7 |
| | 24 eco | 1 | EL1x24ngn5 | A2 | 1 | 1 | 130 | 25 | 0.12-0.11 | 22.5 |
| | 24 eco | 2 | EL2x24ngn5 | A2 BAT | 2 | 8 | 193 | 49 | 0.24-0.21 | 22.5 |
| | 24 eco | 3 | EL3/4x24ngn5 | A2 BAT | 2 | 6 | 208 | 73 | 0.34-0.30 | 22.5 |
| | 24 eco | 4 | EL3/4x24ngn5 | A2 BAT | 2 | 7 | 208 | 97 | 0.44-0.40 | 22.5 |
| | 28 eco | 1 | EL1x14-35ngn5 | A2 BAT | 1 | 1 | 127 | 30 | 0.15-0.12 | 27.8 |
| | 28 eco | 2 | EL2x14-35ngn5 | A2 BAT | 2 | 12 | 204 | 60 | 0.29-0.25 | 27.8 |
| | 35 eco | 1 | EL1x14-35ngn5 | A2 BAT | 1 | 1 | 127 | 38 | 0.18-0.16 | 34.7 |
| | 35 eco | 2 | EL2x14-35ngn5 | A2 BAT | 2 | 12 | 204 | 75 | 0.35-0.31 | 34.7 |
| | 39 eco | 1 | EL1x39/36ngn5 | A2 BAT | 1 | 1 | 130 | 42 | 0.19-0.18 | 38 |
| | 39 eco | 2 | EL2x39/36ngn5 | A2 BAT | 2 | 8 | 195 | 81 | 0.36-0.32 | 38 |
| | 49 eco | 1 | EL1x49ngn5 | A2 BAT | 1 | 1 | 130 | 55 | 0.25-0.23 | 49.3 |
| | 49 eco | 2 | EL2x49ngn5 | A2 BAT | 2 | 12 | 211 | 105 | 0.50-0.45 | 49.3 |
| | 49 eco | 2 | EL2x49ngn5-XL | A2 BAT | 3 | 12 | 265 | 105 | 0.50-0.45 | 49.3 |
| | 54 eco | 1 | EL1x54ngn5 | A2 BAT | 1 | 1 | 130 | 58 | 0.26-0.24 | 53.8 |
| | 54 eco | 2 | EL2x54ngn5 | A2 BAT | 2 | 8 | 206 | 115 | 0.53-0.48 | 53.8 |
| | 54 eco | 2 | EL2x54ngn5-XL | A2 BAT | 3 | 8 | 260 | 115 | 0.53-0.48 | 53.8 |
| | 80 eco | 1 | EL1x80ngn5 | A2 BAT | 2 | 1 | 192 | 86 | 0.42-0.36 | 80 |
| | 80 eco | 2 | EL2x80ngn5 | A2 BAT | 3 | 12 | 300 | 170 | 0.80-0.73 | 80 |

Note: See pages 30-33 for connection diagrams and additional characteristics.

1) Maximum 10 % energy saving achieved from declared maximum value depending on difference in lamps from various manufacturers.

| Dimensions | 1 | 2 | 3 |
|-----------------|-----|-----|-----|
| Lenght 'a' (mm) | 190 | 280 | 360 |
| Width 'b' (mm) | 30 | 30 | 30 |
| Height 'c' (mm) | 21 | 21 | 21 |
| 'd' (mm) | 180 | 270 | 350 |



Delivery information

| Ballast | Unit package | | Transportation package | | |
|---------------------------|-------------------------|-----------------------|----------------------------------|--------------------|--------------------|
| | Minimum delivery amount | Plastic binding strip | One-way pallet 1200 x 820 (pcs.) | Pallet weight (kg) | Pallet height (cm) |
| EL1 x ngn5 | 10 | ● | 2000 | 260-300 | 48 |
| EL2 x ngn5 & EL3/4 x ngn5 | 10 | ● | 2000 | 400-450 | 56 |
| EL2x55ngn5 & EL2x80ngn5 | 10 | ● | 1500 | 400-420 | 56 |